

# Dr Mostafa Analoui

The Livingston Group

## **Abstract**

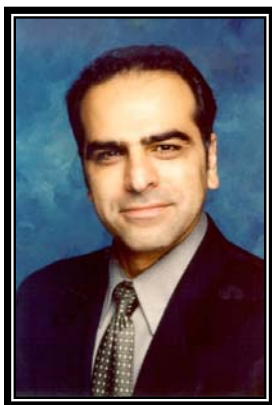
### **'Nanobiotechnology for Development of Therapeutics and Diagnostics: Science and Business Perspectives'**

Research and Development in Life Sciences are greatly impacted by recent advances in conventional and emerging technologies, especially in understanding of disease, drug discovery, and novel diagnostics. These technological contributions have led to innovation and introduction of a number of therapeutic solutions with notable improvement in public health. Nanobiotechnology, a class of wide ranging technologies, is being positioned as one of critical class of technologies, with broad reaching impacts in Life Science R&D, including drug discovery, formulation, delivery, clinical assessment and monitoring. Additionally, there is significant emerging need for high-precision and rapid diagnostics for streamlining and customizing treatment and disease management.

Nanobiotechnology's impact within drug discovery and development is manifesting itself in two ways, with different time horizons. The immediate and short term impact is being materialized through innovative formulation and delivery of compounds in different stages of development, including the ones already in the market. In the longer term horizon, there is a promise of new class of drugs designed around nanobiotechnology approach from ground up. There are early indicators of such potential success stories worth allocating resources and attention. In this presentation science and business aspects of nanobiotechnology as it relates to Therapeutics and Diagnostics will be discussed. Examples of recent clinical success stories will provided, as well as investment and financial outlook in this area.

## **Speaker biography**

### **Dr Mostafa Analoui**



**Mostafa Analoui, Ph.D.**, is Head of Healthcare and Life Science at The Livingston Group (New York, NY) and Senior Vice President of Charlesson Pharmaceuticals. Previously he was the Senior Director at Pfizer Global Research and Development in Connecticut. He is also adjunct Professor of Radiology and Oral Pathology, Medicine at Indiana University Schools of Medicine and Dentistry. Dr. Analoui is actively involved in investment, management and scientific/business development of novel biotechnologies and methodologies, global strategies. Prior to joining Pfizer, Dr. Analoui was previously the Director of Oral and Maxillofacial Imaging Research at Indiana University, and Associate professor of Biomedical Engineering and Electrical & Comp Engineering at Purdue University. He was also President and CEO of Therametric Technology Inc. In addition to industry leadership in biomedical field, he lectures nationally and internationally. He has also served on various scientific and business advisory committees and boards. Dr. Analoui has authored over 130 publications, including journal articles, book chapters, and technical reports.